



Cat[®] 308 CR (Fixed Boom)

MINI HYDRAULIC EXCAVATOR

FEATURES:

The Cat[®] 308 CR Mini Excavator delivers maximum power and performance in a mini size to help you work in a wide range of applications.

ALL DAY COMFORT

- A sealed and pressurized cab is equipped with an improved air conditioning system, adjustable wrist rests and a suspension seat to help keep you working comfortably all day long.

EASY TO OPERATE

- Controls are easy to use and the intuitive Next Generation Monitor provides customizable machine operator preferences and easy to read machine information.

STICK STEER TRAVEL MODE

- Moving around the job site is even easier with Cat Stick Steer. Easily switch from traditional travel controls with levers and pedals to joystick controls with a push of a button. The benefit of less effort and improved control is in your hands!

BIG PERFORMANCE IN A MINI DESIGN

- Increased lifting, swinging, travel and multi-functioning performance help you get the job done more efficiently, and blade float allows for easy clean up.

SAFETY ON THE JOB SITE

- Your safety is our top priority. The Cat mini excavator is designed to help keep you safe on the job. A back-up camera, courtesy work lights and a fluorescent retractable seat belt are just a few of the safety features we've built into the machine.

SIMPLE SERVICE FOR LESS DOWNTIME

- Maintenance is quick and easy on the Cat mini excavator. Routine check points are easy to access at ground level with grouped service points and robust service panels.

LOWER OPERATING COSTS

- Equipped with features such as auto idle, auto engine shutdown, and efficient hydraulics with a variable displacement pump, the Cat mini excavator was designed with reducing your operating costs in mind.

UNMATCHED DEALER SUPPORT

- Your Cat dealer is here to help you reach your business goals. From providing equipment solutions to operator training to service needs and beyond, your Cat dealer is ready to help.

Specifications

Engine

Engine Model	Cat [®] C3.3B	
U.S. EPA Tier 4 Final/EU Stage V		
Net Power @ 2,200 rpm		
ISO 9249:2007, 80/1269/EEC	51.8 kW	69.5 hp
Gross Power		
SAE J1995:2014	55.4 kW	74.3 hp
Bore	94 mm	3.7 in
Stroke	120 mm	4.7 in
Displacement	3.33 L	203 in ³

- Net power advertised is the power available at the flywheel when the engine is equipped with air cleaner, exhaust system and fan.

Weights

Minimum Operating Weight with Cab*	7330 kg	16,163 lb
Maximum Operating Weight with Cab**	8025 kg	17,695 lb

*Minimum Weight is based on rubber tracks, no counterweight, operator, full fuel tank, standard stick, blade and no bucket.

**Maximum Weight is based on steel tracks with rubber pads, counterweight, operator, full fuel tank, long stick, blade and no bucket.

Weight Increase from Minimum Configuration

Counterweight	250 kg	551 lb
Long Stick	85 kg	187 lb
Steel Tracks with Pads	300 kg	662 lb



308 CR Mini Hydraulic Excavator

Travel System

Travel Speed – High	4.9 km/h	3.0 mph
Travel Speed – Low	3.0 km/h	1.8 mph
Maximum Traction Force – High Speed	29.3 kN	6,587 lbf
Maximum Traction Force – Low Speed	71 kN	15,962 lbf
Ground Pressure – Minimum Weight	32.1 kPa	4.7 psi
Ground Pressure – Maximum Weight	35.0 kPa	5.1 psi
Gradeability (maximum)	30 degrees	

Service Refill Capacities

Cooling System	10.0 L	2.6 gal
Engine Oil	11.2 L	3.0 gal
Fuel Tank	145 L	38 gal
Hydraulic Tank	53 L	14 gal
Hydraulic System	110 L	29 gal

Hydraulic System

Load Sensing Hydraulics with Variable Displacement Piston Pump		
Pump Flow @ 2,400 rpm	167 L/min	44 gal/min
Operating Pressure – Equipment	285 bar	4,134 psi
Operating Pressure – Travel	285 bar	4,134 psi
Operating Pressure – Swing	250 bar	3,626 psi
Maximum Auxiliary Circuit – Primary		
Flow at Pump*	131 L/min	35 gal/min
Pressure at Pump*	285 bar	4,134 psi
Maximum Auxiliary Circuit – Secondary		
Flow at Pump*	33 L/min	9 gal/min
Pressure at Pump*	285 bar	4,134 psi
Digging Force – Stick (Standard)	41.3 kN	9,285 lbf
Digging Force – Stick (Long)	36.7 kN	8,250 lbf
Digging Force – Bucket	58.9 kN	13,241 lbf

*Flow and pressure are not combinable. Under load, as flow rises pressure goes down.

Swing System

Machine Swing Speed	10.6 rpm
---------------------	----------

Blade

Width (Standard)	2300 mm	90.6 in
Width (Wide)	2450 mm	96.5 in
Height	431 mm	17 in

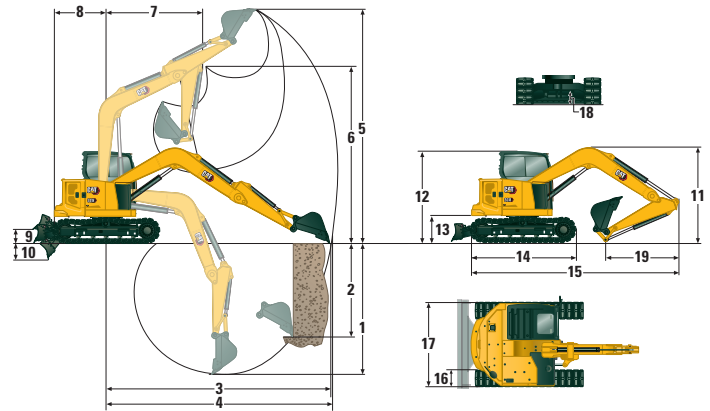
Certification – Cab

Roll Over Protective Structure (ROPS)	ISO 12117-2:2008
Tip Over Protective Structure (TOPS)	ISO 12117:1997
Top Guard	ISO 10262:1998 (Level I)

Sound

Operator Sound Pressure (ISO 6396:2008)	72 dB(A)
Average Exterior Sound Pressure (ISO 6395:2008)	99 dB(A)

• European Union Directive “2000/14/EC”



Dimensions

	Standard Stick	Long Stick
1 Dig Depth	4145 mm (163 in)	4687 mm (185 in)
2 Vertical Wall	3600 mm (142 in)	4110 mm (162 in)
3 Maximum Reach at Ground Level	6246 mm (246 in)	6766 mm (266 in)
4 Maximum Reach	6391 mm (252 in)	6900 mm (272 in)
5 Maximum Dig Height	7392 mm (291 in)	7809 mm (307 in)
6 Maximum Dump Clearance	5255 mm (207 in)	5672 mm (223 in)
7 Boom in Reach	1681 mm (66 in)	2250 mm (89 in)
8 Tail Swing		
with Counterweight	1425 mm (56 in)	1425 mm (56 in)
without Counterweight	1290 mm (51 in)	1290 mm (51 in)
9 Maximum Blade Height	370 mm (14.6 in)	370 mm (14.6 in)
10 Maximum Blade Depth	407 mm (16.0 in)	407 mm (16.0 in)
11 Height		
Boom Transport – No Tools*	2466 mm (97 in)	2540 mm (100 in)
Boom Working – With Tools**	2671 mm (105 in)	3080 mm (121 in)
12 Cab Height	2541 mm (100 in)	2541 mm (100 in)
13 Swing Bearing Height	756 mm (30 in)	756 mm (30 in)
14 Overall Undercarriage Length	2880 mm (113 in)	2880 mm (113 in)
15 Overall Shipping Length		
with Counterweight	5780 mm (228 in)	5800 mm (228 in)***
without Counterweight	5645 mm (222 in)	5665 mm (223 in)***
16 Track Belt/Shoe Width	450 mm (18 in)	450 mm (18 in)
17 Overall Track Width	2300 mm (91 in)	2300 mm (91 in)
18 Ground Clearance	350 mm (14 in)	350 mm (14 in)
19 Stick Length	1665 mm (66 in)	2208 mm (87 in)

*Boom Height when stick is pinned in transport position with no attachments.

**Boom Height when stick is pinned in working position with attachments. Standard Stick offers only one pin position.

***With blade positioned at the rear of the machine.

Air Conditioning System

The air conditioning system on this machine contains the fluorinated greenhouse gas refrigerant R134a (Global Warming Potential = 1430). The system contains 1.0 kg of refrigerant which has a CO₂ equivalent of 1.430 metric tonnes.

308 CR Mini Hydraulic Excavator

Lift Capacities – Minimum Configuration

Lift Point Height			Lift Point Radius 3 m (9.8 ft)			Lift Point Radius 4.5 m (14.8 ft)			Lift Point Radius (Maximum)			
			Over Front		Over Side	Over Front		Over Side	Over Front		Over Side	m (ft)
			Blade Down	Blade Up		Blade Down	Blade Up		Blade Down	Blade Up		
4.5 m (14.8 ft)	Standard Stick	kg (lb)	*2345 (*5,171)	*2345 (*5,171)	*2345 (*5,171)				*1498 (*3,303)	*1498 (*3,303)	*1498 (*3,303)	4.27 (14.0)
	Long Stick	kg (lb)	*1926 (*4,247)	*1926 (*4,247)	*1926 (*4,247)	*1874 (*4,132)	*1874 (*4,132)	1427 (3,147)	*1434 (*3,162)	*1434 (*3,162)	1219 (2,688)	4.89 (16.0)
3 m (9.8 ft)	Standard Stick	kg (lb)	*2864 (*6,315)	*2864 (*6,315)	*2864 (*6,315)	*2217 (*4,888)	1588 (3,502)	1388 (3,061)	*1406 (*3,100)	*1406 (*3,100)	1139 (2,511)	5.06 (16.6)
	Long Stick	kg (lb)	*2445 (*5,391)	*2445 (*5,391)	*2445 (*5,391)	*1985 (*4,377)	1588 (3,502)	1385 (3,054)	*1366 (*3,012)	1083 (2,388)	946 (2,086)	5.59 (18.3)
1.5 m (4.9 ft)	Standard Stick	kg (lb)	*3627 (*7,998)	2856 (6,297)	2405 (5,303)	*2414 (*5,323)	1512 (3,334)	1315 (2,900)	*1467 (*3,235)	1163 (2,564)	1016 (2,240)	5.32 (17.5)
	Long Stick	kg (lb)	*3308 (*7,294)	*3308 (*7,294)	2425 (5,347)	*2250 (*4,961)	1493 (3,292)	1294 (2,853)	*1419 (*3,129)	977 (2,154)	850 (1,874)	5.83 (19.1)
0 m (0 ft)	Standard Stick	kg (lb)	*3767 (*8,306)	2704 (5,962)	2265 (4,994)	*2450 (*5,402)	1450 (3,197)	1256 (2,769)	*1691 (*3,729)	1193 (2,631)	1039 (2,291)	5.15 (16.9)
	Long Stick	kg (lb)	*3719 (*8,200)	2661 (5,868)	2220 (4,895)	*2402 (*5,296)	1409 (3,107)	1214 (2,677)	*1602 (*3,532)	992 (2,187)	860 (1,896)	5.67 (18.6)

Maximum Weight: steel tracks with pads, cab, operator, full fuel tank, counterweight, no bucket

Lift Capacities – Maximum Configuration

Lift Point Height			Lift Point Radius 3 m (9.8 ft)			Lift Point Radius 4.5 m (14.8 ft)			Lift Point Radius (Maximum)			
			Over Front		Over Side	Over Front		Over Side	Over Front		Over Side	m (ft)
			Blade Down	Blade Up		Blade Down	Blade Up		Blade Down	Blade Up		
4.5 m (14.8 ft)	Standard Stick	kg (lb)	*2345 (*5,171)	*2345 (*5,171)	*2345 (*5,171)				*1498 (*3,303)	*1498 (*3,303)	*1498 (*3,303)	4.27 (14.0)
	Long Stick	kg (lb)	*1926 (*4,247)	*1926 (*4,247)	*1926 (*4,247)	*1874 (*4,132)	*1874 (*4,132)	*1874 (*4,132)	*1434 (*3,162)	*1434 (*3,162)	*1434 (*3,162)	4.89 (16.0)
3 m (9.8 ft)	Standard Stick	kg (lb)	*2864 (*6,315)	*2864 (*6,315)	*2864 (*6,315)	*2217 (*4,888)	1807 (3,984)	1581 (3,486)	*1406 (*3,100)	*1406 (*3,100)	*1406 (*3,100)	5.06 (16.6)
	Long Stick	kg (lb)	*2445 (*5,391)	*2445 (*5,391)	*2445 (*5,391)	*1985 (*4,377)	*1985 (*4,377)	1579 (3,482)	*1366 (*3,012)	*1366 (*3,012)	1094 (2,412)	5.59 (18.3)
1.5 m (4.9 ft)	Standard Stick	kg (lb)	*3627 (*7,998)	*3627 (*7,998)	2743 (6,048)	*2414 (*5,323)	1731 (3,817)	1509 (3,327)	*1467 (*3,235)	*1467 (*3,235)	1173 (2,586)	5.32 (17.5)
	Long Stick	kg (lb)	*3308 (*7,294)	*3308 (*7,294)	2762 (6,090)	*2250 (*4,961)	1712 (3,775)	1488 (3,281)	*1419 (*3,129)	1134 (2,500)	991 (2,185)	5.83 (19.1)
0 m (0 ft)	Standard Stick	kg (lb)	*3767 (*8,306)	3100 (6,836)	2603 (5,740)	*2450 (*5,402)	1669 (3,680)	1450 (3,197)	*1691 (*3,729)	1377 (3,036)	1203 (2,653)	5.15 (16.9)
	Long Stick	kg (lb)	*3719 (*8,200)	3057 (6,741)	2558 (5,640)	*2402 (*5,296)	1628 (3,590)	1407 (3,102)	*1602 (*3,532)	1154 (2,545)	1005 (2,216)	5.67 (18.6)

Maximum Weight includes steel tracks with pads, cab, operator, full fuel tank, counterweight and no bucket.

*The above loads are in compliance with hydraulic excavator lift capacity rating standard ISO 10567:2007 and they do not exceed 87% of hydraulic lifting capacity or 75% of tipping capacity. The excavator bucket weight is not included on this chart.

308 CR Mini Hydraulic Excavator

Standard and Optional Equipment

Standard and optional equipment may vary. Consult your Cat dealer for details.

	Standard	Optional		Standard	Optional
ENGINE			OPERATOR ENVIRONMENT (CONTINUED)		
Cat C3.3 Diesel Engine (U.S. EPA Tier 4 Final/EU Stage V) – Electronic Engine, Turbo, Diesel Particulate Filter (DPF)	✓		Next Generation Advanced Monitor <i>(below are all included with Next Generation Advanced Monitor option)</i>		✓
Automatic Engine Idle	✓		– Touch Screen		
Automatic Engine Shutdown	✓		– Site Reference System		
Automatic Swing Brake	✓		– High Definition Camera Capable (IP68 & IP69K)		
Automatic Two Speed Travel	✓		– Numeric Security Code		
Fuel Water Separator with Indicator	✓		UNDERCARRIAGE		
Radial Seal – Double Element Air Filter	✓		Greased and Lubricated Track	✓	
Extended Life Coolant, –37° C (–37° F)	✓		Tie Down Eyes on Track Frame	✓	
Ecology Drain	✓		Dozer Blade	✓	
HYDRAULICS			Wide Dozer Blade		✓
Smart Tech Electronic Pump	✓		Dozer Float	✓	
Electronic Variable Displacement Piston Pump	✓		Bolt-on, Reversible Wear Edge	✓	
Load Sensing/Flow Sharing Hydraulics	✓		Steel Tracks (450 mm/17.7 in wide)		✓
Power On Demand	✓		Wide Steel Tracks (600 mm/23.6 in)		✓
Hydraulic Temperature Monitoring	✓		Steel Track with Rubber Pads		✓
Certified Accumulator	✓		Track Guides		✓
HYDO™ Advanced Hydraulic Oil	✓		BOOM, STICK AND LINKAGES		
OPERATOR ENVIRONMENT			One Piece Boom (3700 mm/145.7 in)	✓	
Top Guard ISO 10262 1998 Level I	✓		Standard Stick (1665 mm/65.6 in)	✓	
ROPS ISO 12117-2:2008	✓		Long Stick (2208 mm/92.9 in)		✓
Stick Steer Mode	✓		Front Shovel Capable – Pin-on/Manual Coupler/Hydraulic Coupler (not available in all regions)	✓	
Travel Cruise Control	✓		Attachments including Buckets, Augers and Hammers		✓
Control Pattern Changer	✓		2nd Auxiliary Hydraulic Lines		✓
Adjustable Wrist Rests	✓		Boom Lowering Check Valve	✓	
Molded Footrests	✓		Stick Lowering Check Valve	✓	
Removable, Washable Floor Mat	✓		Bucket Linkage with Lift Eye		✓
Travel Pedals and Hand Levers	✓		ELECTRICAL		
Cat Key with Passcode Option	✓		12 Volt Electrical System	✓	
Push to Start with Bluetooth® Key		✓	60 Ampere Alternator	✓	
HVAC with Automatic Temperature Control	✓		Circuit Breaker	✓	
Hydraulic Lockout Controls	✓		850 CCA Maintenance Free Battery	✓	
Integrated Lower Front Window	✓		Battery Disconnect	✓	
Assisted Front Window Overhead Storage	✓		Ignition Key Stop Switch	✓	
Rear Window Emergency Exit	✓		Product Link Elite (regulations apply)		✓
Fabric, High Back, Suspension Seat	✓		Travel Alarm		✓
Air Suspension Heated Seat		✓	Rearview Camera		✓
Retractable Seat Belt (75 mm/3 in)	✓		Rotating Beacon		✓
Coat Hook	✓		GUARDING		
Cup Holder	✓		Mesh Front Guard ISO 10262 1998 Level I		✓
LED Interior Light	✓		Heavy Duty Front Guard ISO 10262 1998 Level II		✓
Literature Holder	✓		Overhead Cab Guard ISO 10262 1998 Level II		✓
Mounting Bosses for Top and Front Guards	✓		Polycarbonate Front Window EN356 P5A		✓
12V Power Socket	✓		Track Guards		✓
Radio – Bluetooth, Auxiliary, Microphone, USB (charging only)	✓		OTHER		
Skylight	✓		Additional Counterweight		✓
Signaling/Warning Horn	✓		Locks on External Enclosure Doors	✓	
Cab and (left side) Boom Work Lights	✓		Lockable Fuel Cap	✓	
Utility Space for Mobile Phone	✓		Beacon Socket	✓	
Rain Visor		✓	Rear Reflectors	✓	
Next Generation Color LCD Monitor (IP66)	✓		Water Jacket Heater		✓
– Jog Dial Interface	✓		Refueling Pump	✓	
– Fuel Level and Coolant Temperature Gauges	✓				
– Maintenance and Machine Monitoring	✓				
– Performance and Machine Adjustments	✓				
– Numeric Security Code	✓				
– Multiple Languages	✓				
– Camera Ready (IP68 & IP69K)	✓				
– Hour Meter with Wake Up Switch	✓				

For more complete information on Cat products, dealer services, and industry solutions, visit us on the web at www.cat.com

© 2021 Caterpillar
All rights reserved

Materials and specifications are subject to change without notice. Featured machines in photos may include additional equipment. See your Cat dealer for available options.

CAT, CATERPILLAR, LET'S DO THE WORK, their respective logos, "Caterpillar Corporate Yellow," the "Power Edge" and Cat "Modern Hex" trade dress as well as corporate and product identity used herein, are trademarks of Caterpillar and may not be used without permission.

AEHQ8353 (03-2021)
Build Number: 07A
(Europe)

